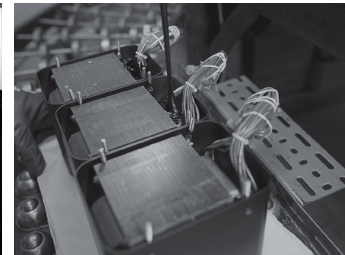


# MC452 stereo amplifier

- Our most powerful McIntosh stereo amplifier, the MC452 delivers the most music with all speaker brands and types.
- New McIntosh chassis and faceplate design featuring larger easier to read power wattmeters framed with attractive aluminum side handles. New chassis design allows a cool, quiet, long life performance.
- Twin-balanced input and output flexibility.
- Unique, designed speaker wire binding posts make the perfect connection with all types of speaker wire terminations and are easier to use.
- Meter backlight control for use with compatible McIntosh "control centers."
- Quad Balanced is a technology that McIntosh has perfected for nearly 20 years and results in the most music with the best fidelity.



Proven technologies result in  
an amplifier that will last a lifetime.

**McIntosh**<sup>®</sup>

LEGENDARY PERFORMANCE™

[www.mcintoshlabs.com](http://www.mcintoshlabs.com)

# MC452 stereo amplifier

## Power Output:

450 Watts minimum sine wave continuous average power output per channel with both channels operating

## Output Load Impedance:

Terminals for 8, 4 and 2 Ohms

## Rated Power Band:

20Hz to 20kHz

## Total Harmonic Distortion:

0.005% maximum harmonic distortion at any level from 250 milliwatts to rated power output

## Overall Dimensions (W x H x D):

17-1/2" (44.45cm) x 9-7/16" (23.97cm) (including feet) x 22" (55.88cm) (including front panel, handles and cables)

## Weight:

110 lbs (49.9kg) net,  
143 lbs (64.9kg) in shipping carton

## Exclusive McIntosh

### Power Assurance System:

A collection of technologies that enhance performance and reliability while protecting the amplifier and loudspeakers.

### Power Guard®:

A waveform comparison circuit continuously monitors both input and output signals. Power Guard dynamically adjusts the input level to avoid clipping while preventing harsh sounding distortion.

### Sentry Monitor:

Fuse-less short-circuit protection circuit disengages the output stage before current exceeds safe operating level; resets automatically.



## Output Autoformer:

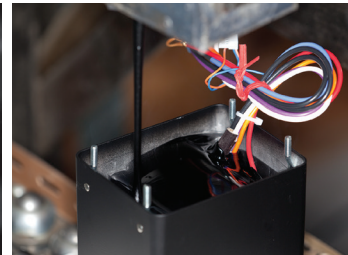
Unique McIntosh technology delivers the full rated amplifier output with the least possible distortion into loudspeaker impedances of 2, 4, or 8 Ohms; you get all the power you paid for and the freedom to choose any loudspeaker.

## Wattmeter:

Swift, accurate response reveals program peaks to make staying within the power limits of your loudspeakers is easy.

## For the Consumer's Protection:

In order to ensure the highest level of customer satisfaction, "new" McIntosh products may only be purchased over-the-counter or delivered and installed by an Authorized McIntosh Dealer. McIntosh products that are purchased over the Internet, by phone or mail order are presumed to be "used" and do not qualify for any McIntosh Warranty. McIntosh does not warrant, in any way, products that are purchased from anyone who is not an Authorized Dealer or products that have had their serial number altered or defaced.



## Companion Products

The McIntosh C50 Preamplifier, MR88 AM/FM/HD Tuner, MCD500 SACD/CD Player, MT10 Turntable, XR200 Loudspeakers, MEN220 Room Correction System and MPC1500 Power Controller are logical companions for the MC452 Stereo Amplifier. Your Authorized Dealer can provide additional information on other McIntosh product combinations.

To learn more, please call us at 1.800.538.6576.

# McIntosh®

LEGENDARY PERFORMANCE™

www.mcintoshlabs.com